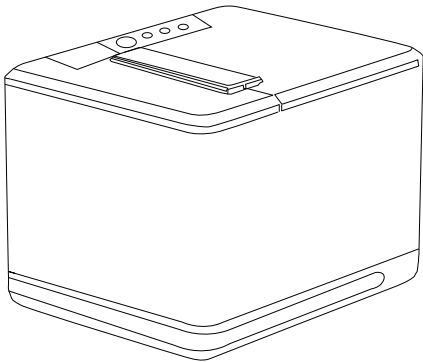


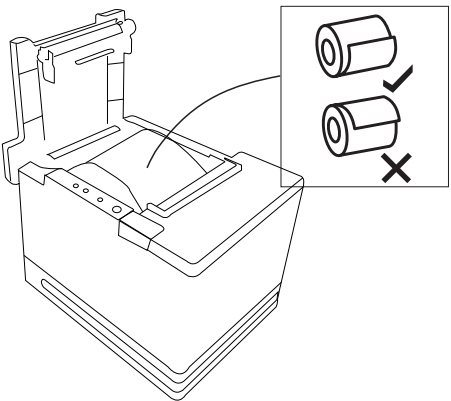
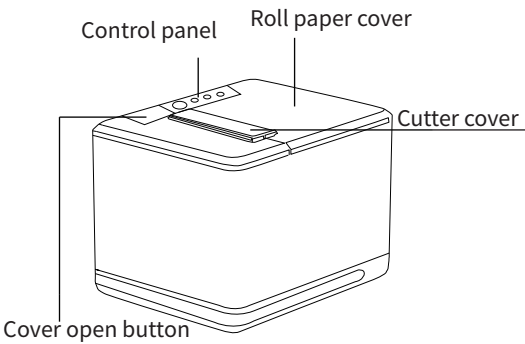
Mini Receipt Printer  
User's manual

OUTLOOKAND INSTALL PAPER ROLL

STEP 1 - CONNECT PRINTER



Tips: Product design and specifications are subject to change without prior notice.



Remove the used roll paper core if any, and insert a new roll paper. The correct direction of the paper is shown in the illustration above.

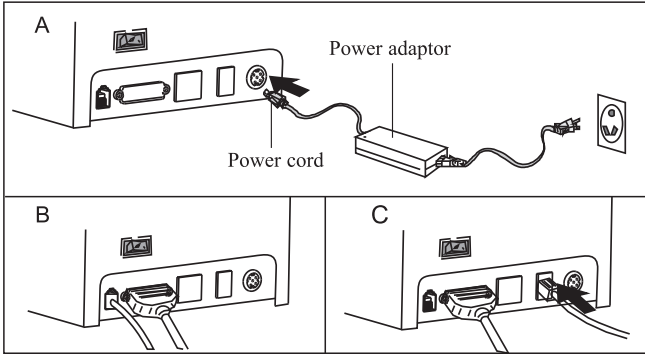
Button name, indicator LED light and function

**Power Indicator:**  
Lights on means connected properly.

**Error Indicator:**  
When out of paper, cutter or printing head overheat occurred, the ALARM indicator twinkles.

**Paper Indicator(LED Light):**  
Blue and red lights are on means lack of paper, no alarm means normal.

**Feed Button**  
Press to feed paper manually.

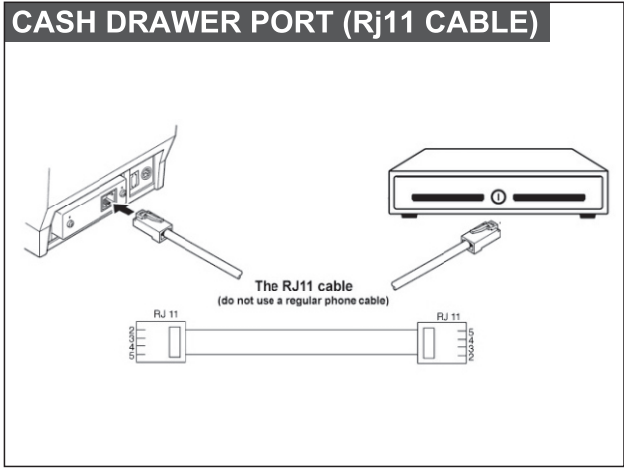
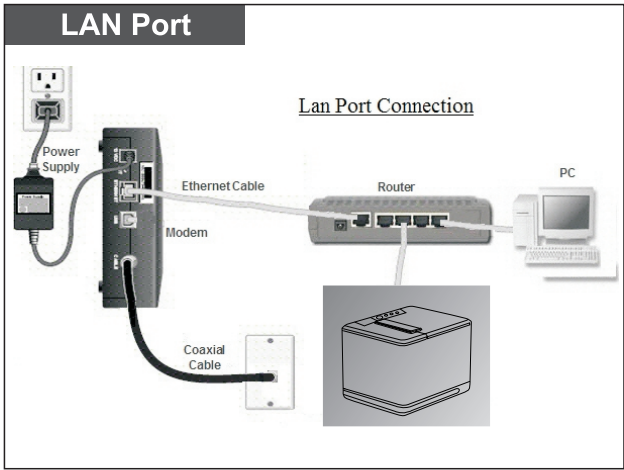
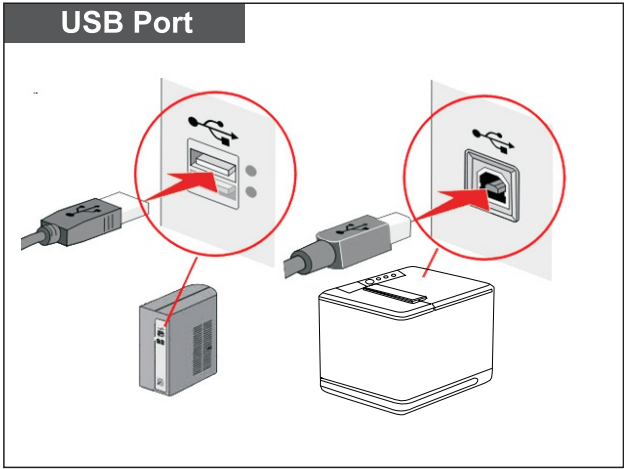
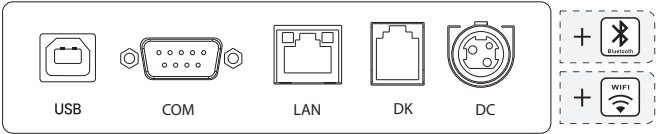


A. Connect AC cable to the power adaptor, DC power cable to the printer.  
B. Connect printer and computer/tablet.  
C. Connect cash drawer.

CONNECT PRINTER

CONNECT PRINTER

STEP 2 - INSTALL DRIVER



TIPS

Self Test

Printer connected power and keep off status, then press the "FEED" button and turn on the power, after hear the beeper sounds, release "FEED button", first page will be printed, the second press in 2s for code page printing

Selftest  
Firmware Version:2.20GR\_hwv10  
Print Speed:260mm/s  
Command mode:EPSON(ESC/POS)  
Firmware modify:2021/07/28  
Cutter enable:Yes  
Beeper enable:Yes  
Black mark mode:No  
Density Level:5(Max=8)  
Char line FontA/B:48/64  
Default ASCII Font:FONTA  
Default code page:Page0  
Chinese character:No  
USB&SERIAL&LAN&WIFI Interface  
USB port fixed:Yes  
USB Port mode:USB Printing  
Serial config:19200bps,n,8,1  
Ethernet:TCP/IP,10M/100M  
MAC address 00-CA-D6-CD-33-25  
IP address:192.168.1.100  
Subnet Mask:255.255.255.0  
Gate Way:192.168.1.1

Code page: page 0  
0 stands for  
PC437(Std. Europe)

Selftest

Code Page:  
0:PC437(Std. Europe)1:(Katakana)  
2:PC850(Multilingual)3:PC860(Portugal)  
4:PC863(Canadian)5:PC865(Nordic)  
6:(West Europe)7:(Greek)  
8:(Hebrew)9:(East Europe)  
10:(Iran)11:(WPC1252)  
12:PC866(Cyrillic#2)13:PC852(Latin2)  
14:(PC858)15:(IranII)  
16:(Latvian)17:(Arabic)  
18:(PT1511251)19:(PC747)  
20:(WPC1257)21:(Thai)  
22:(Vietnam)23:(PC864)  
24:(PC1001)25:(Uigur)  
26:(Hebrew)27:WPC1255(Israel)  
28:PC437(Std. Europe)29:(Katakana)  
30:PC437(Std. Europe)31:PC858(Mult)  
32:PC 852(Latin-2)33:PC860(Portugu)  
34:PC861(Icelandic)35:PC863(Canadian)  
36:PC865(Nordic)37:PC866(Russian)  
38:PC855(Bulgarian)39:PC857(Turkey)  
40:PC862(Hebrew)41:PC864(Arabic)  
42:PC737(Greek)43:PC851(Greek)  
44:PC869(Greek)45:PC928(Greek)  
46:PC772(Lithuanian)47:PC774(Lithuan)  
48:PC874(Thai)49:WPC1252(Latin1)  
50:WPC1250(Latin-2)51:WPC1251(Cyril)  
52:PC3840(IBM-Russian) 53:PC3841(Gost)  
54:PC3843(Polish)55:PC3844(CS2)  
56:PC3845(Hungarian)57:PC3846(Turkish)  
58:PC3847(Brazil-ABNT) 59:PC3848(Brazil)  
60:PC1001(Arabic)61:PC2001(Lithuan)  
62:PC3001(Estonian-1)63:PC3002(Eston-2)  
64:PC3011(Latvian-1)65:PC3012(Latv-2)  
66:PC3021(Bulgarian)67:PC3041(Maltese)  
68:PC852(Croatia)69:VISCII  
70:WPC1256(Arabic)

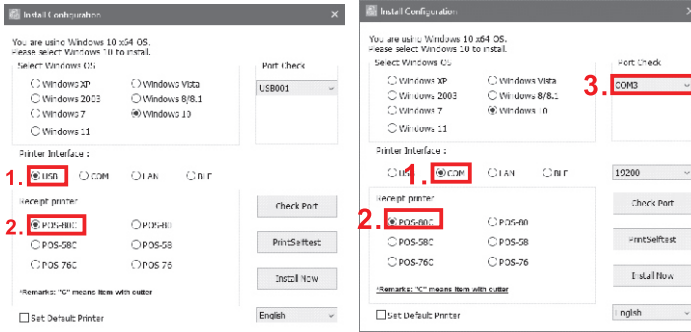
Code Page

USB +Serial port driver installation

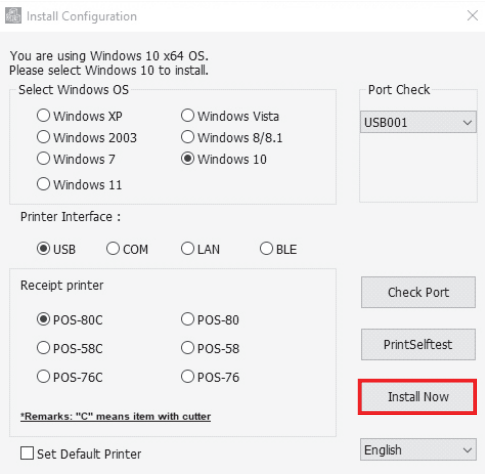


1. Double-click "POS Printer Driver V8.11"
2. USB driver installation or Serial port driver installation

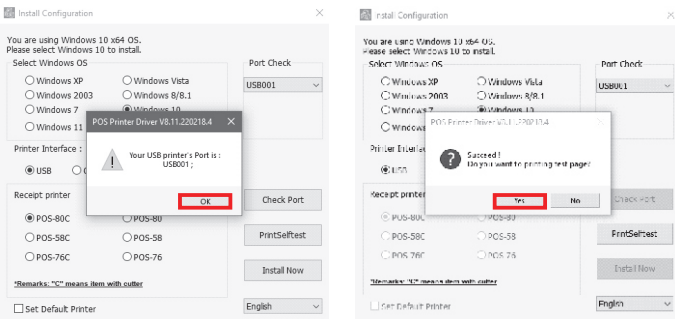
- 1) Select USB port and printer type;
- 1) Select serial port, printer type and port number;



- 2) clic"install now"to stat installation



- 3) Select OK.
- 4) Select YES to print the test page and check the printer driver name;



- 5) Installation is completed.



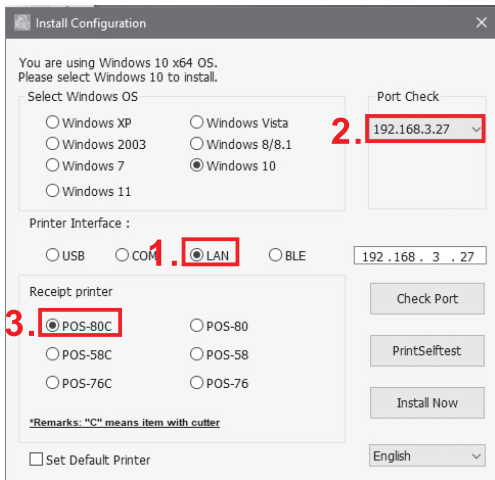
# INSTALL DRIVER

## LAN port driver installation

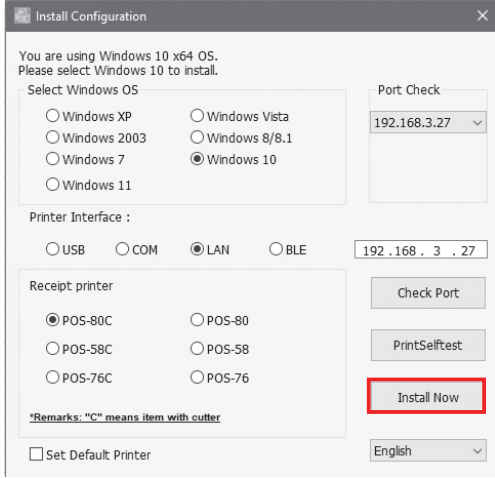


1. Double-click "POS Printer Driver V8.11"
2. LAN driver installation

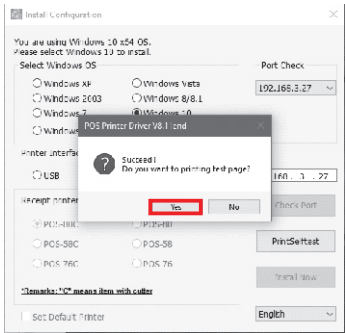
1) Select LAN port and printer type;



2) Click Start Installation.



3) Select YES to print the test page and check the printer driver name;



4) Installation is completed.

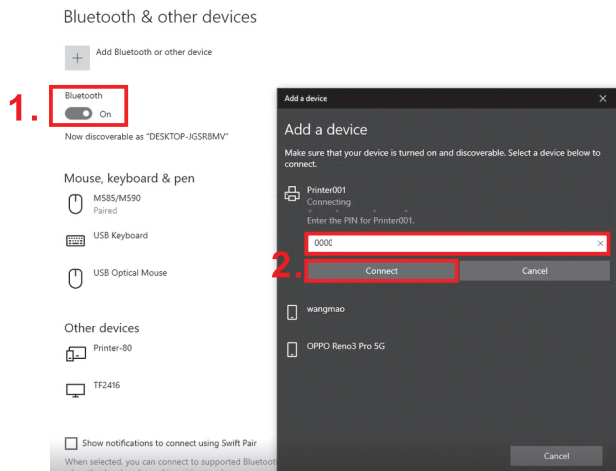
# INSTALL DRIVER

## Bluetooth driver installation

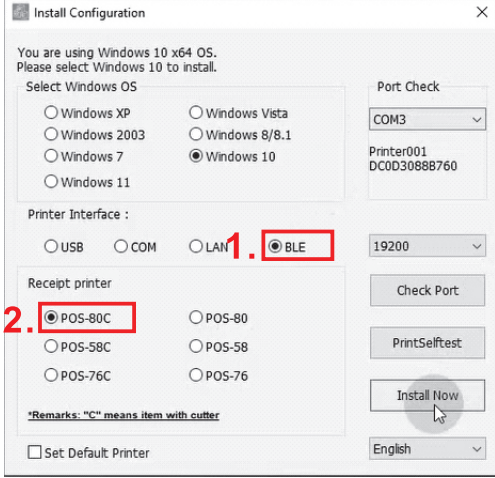


1. Double-click "POS Printer Driver V8.11"
2. Bluetooth driver installation

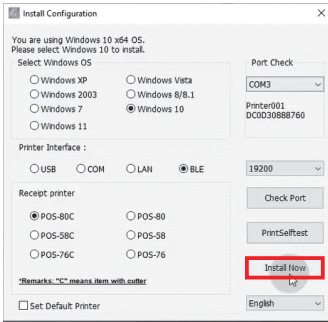
1) The computer is connected to the printer Bluetooth, Bluetooth name: **Printer001** key: **0000**



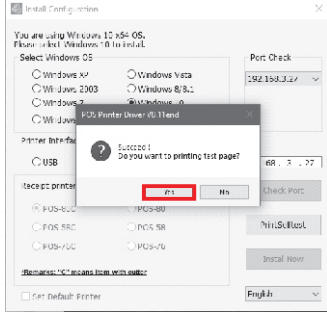
2) Select the Bluetooth port and printer type;



3) Click Start Installation.



4) Select YES to print the test page and check the printer driver name;



5) Installation is completed.

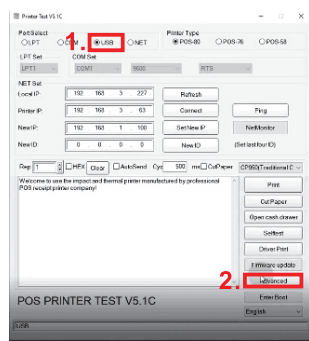
# INSTALL DRIVER

## WIFI driver installation

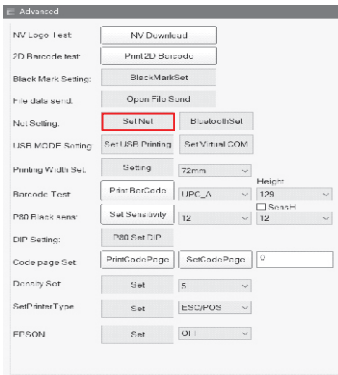


1. Double-click "Printer Test"
2. WIFI driver installation

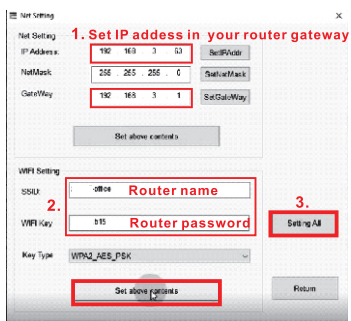
1) Insert USB cable, select USB connection, and select "advanced"



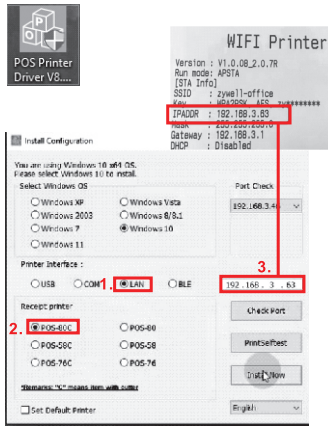
2) Select network settings.



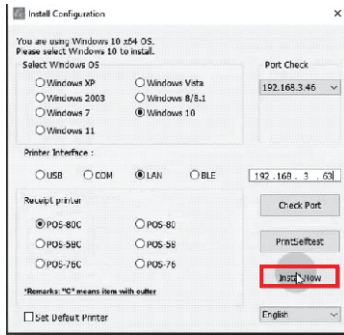
3) Set the IP of the printer WiFi (note that the IP needs to be set in the same gateway as the home network), and the printer is connected to the home network;



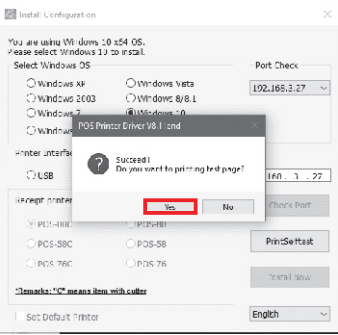
If the wifi DHCP enable, ignore Step 1



5) Click Start Installation.



6) Select YES to print the test page and check the printer driver name;



7) Installation is completed.

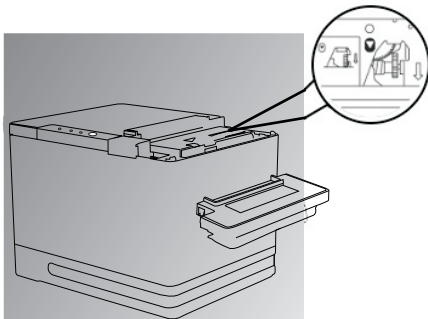
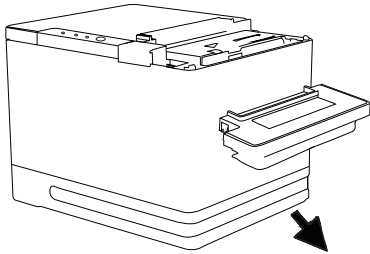
## TROUBLESHOOTING

Problems	Possible Reasons	Solution and Suggestion
Print random code	Character mismatch in font library, text printing garbled.	Non-Chinese printing 1. Confirm whether the Chinese mode is turned on, if so, please use the tool to turn off the Chinese mode.  Operating instructions: 1. use "PrinterTest" to set up and connect the printer; 2. Enter the advanced mode-P 80 set DIP-Chinese mode-no-setting  2. When the Chinese mode is turned off, please select and set the correct language code page.  Guidelines for page printing: print the self-check page-once the self-check page is printed, press the "FEED" key to print the code page; Setup guidelines: 1. use "PrinterTest" to set up and connect the printer; 2. Enter the advanced mode-set the default code page-enter the serial number of the code page characters (please see the code page)-click set code page.
	Serial baud rate mismatch	Keep the baud rate of the device consistent with that of the printer: 1. Print the self-check page to confirm the baud rate of the printer, please check "serial config". 2. Change the baud rate of computer serial port: control panel-view devices and printers-right-click printers-printer properties-ports-configure ports-modify baud rate-apply-OK;
Print font blur	1. Low printing density 2. Poor quality of paper roll 3. The life of the print head is near	1. Replace the paper roll 2. Modify the printing density: use "PrinterTest" to set, connect the printer-advanced-Density set- enter the density value (the higher the value, the higher the density value)-click set; 3. Replace the print head
The printer doesn't work properly.	Printer setup error	Restore factory settings: Instructions: Turn off the power of the printer press the "FEED" key-turn on the power at the same time-when the ERROR LED and the PAPER LED flash twice at the same time, release the "FEED" key, and the factory is successfully restored with a click;
The network connection cannot be printed.	IP address conflict	Modify the printer IP address: use "PrinterTest" to set, connect the printer-NEW IP-input IP-set New IP;
ERROR LED and PAPER LED are always on, and buzzer sounds.	1. The upper cover of the printer is not covered properly; 2. Running out of printing paper;	1. Check whether the upper cover is covered properly; 2. Replace the printing paper;
Bluetooth can't print	Other Bluetooth devices occupy the serial number of printer Bluetooth.	Uninstalling bluetooth device
Incomplete printing	Paper setting is incorrect.	Check the paper setting size

## CUTTER STUCK MAINTENANCE

### Cutter stuck maintenance

- Method (1)**  
Turn off the power and then restart.
- Method (2)**  
Turn the gear on printing head, cutter can be returned to its original position.



**Notice:** To avoid the damage of the printing head and automatic paper cutter, please do not open cutter and mechanism violently.

## CLEARANCE AND MAINTENANCE

### Clearance

One of the following occurred, please clean printing head.

- (1) Printing is not clear.
- (2) Any vertical is not clear.
- (3) Paper feed noisily.

### Printing head cleaning steps:

Parts to be cleaned	Step	Recommend cleaning frequency
Print head	1. Turn off the printer. 2. Allow the print head to cool for at least one minute. 3. Use a cotton swap and 100% ethanol to clean the print head surface.	When change new paper
Rubber roller	1. Turn off the printer. 2. Rotate the platen roller and use a cotton swap to clean with 100% ethanol.	When change new paper
Paper tear bar	Use a cotton swap and 100% ethanol to clean.	When necessary.
Sensor	Use air brush or vacuum to clean dust of sensor.	Monthly.
Inner side of printer	Use air brush or vacuum to clean the dust.	When necessary.

Notice  
1) Please make sure power off when maintaining printer.  
2) Don't touch or scratch printing head surface, roller and sensor.  
3) Avoid gas, acetone or other organic solvent.  
4) Wait till alcohol completely volatilized, close top cover and connect power again. Try print self test to make sure it works properly.



Warning  
No part of this manual can be changed without agreement. The company reserves the right to modify the technologic, components, software and hardware. You may ask the distributors for more product information. No part of chapter in this manual can be copied or transmitted in any format without permission.

